



HAL
open science

Ovarian Real-World International Consortium (ORWIC): A multicentre, real-world analysis of epithelial ovarian cancer treatment and outcomes

Sue Cheeseman, Bethany Levick, Will Sopwith, Hayley Fenton, Eun Ji Nam, Dongkyu Kim, Subin Lim, Elodie Martin, Jean-Sébastien Frenel, François Bocquet, et al.

► To cite this version:

Sue Cheeseman, Bethany Levick, Will Sopwith, Hayley Fenton, Eun Ji Nam, et al.. Ovarian Real-World International Consortium (ORWIC): A multicentre, real-world analysis of epithelial ovarian cancer treatment and outcomes. *Frontiers in Oncology*, 2023, 13, pp.1114435. 10.3389/fonc.2023.1114435 . hal-04756405

HAL Id: hal-04756405

<https://nantes-universite.hal.science/hal-04756405v1>

Submitted on 28 Oct 2024

HAL is a multi-disciplinary open access archive for the deposit and dissemination of scientific research documents, whether they are published or not. The documents may come from teaching and research institutions in France or abroad, or from public or private research centers.

L'archive ouverte pluridisciplinaire **HAL**, est destinée au dépôt et à la diffusion de documents scientifiques de niveau recherche, publiés ou non, émanant des établissements d'enseignement et de recherche français ou étrangers, des laboratoires publics ou privés.



Distributed under a Creative Commons Attribution 4.0 International License



OPEN ACCESS

EDITED BY
Sarah M. Temkin,
(NIH), United States

REVIEWED BY
Levent Mutlu,
Yale New Haven Health System,
United States
Sanket Patil,
Datar Cancer Genetics, India

*CORRESPONDENCE
Geoff Hall
✉ geoff.hall2@nhs.net

SPECIALTY SECTION
This article was submitted to
Gynecological Oncology,
a section of the journal
Frontiers in Oncology

RECEIVED 02 December 2022
ACCEPTED 09 January 2023
PUBLISHED 27 January 2023

CITATION
Cheeseman S, Levick B, Sopwith W,
Fenton H, Nam EJ, Kim D, Lim S, Martin E,
Frenel J-S, Bocquet F, Kubelac P,
Achimas-Cadariu P, Vlad C, Chevrier M,
Rouzier R, Carton M, Savva-Bordalo J,
Magalhães M, Borges M, Wolf A, Becker S,
Niklas N, Guergova-Kuras M and Hall G
(2023) Ovarian Real-World International
Consortium (ORWIC): A multicentre, real-
world analysis of epithelial ovarian cancer
treatment and outcomes.
Front. Oncol. 13:1114435.
doi: 10.3389/fonc.2023.1114435

COPYRIGHT
© 2023 Cheeseman, Levick, Sopwith,
Fenton, Nam, Kim, Lim, Martin, Frenel,
Bocquet, Kubelac, Achimas-Cadariu, Vlad,
Chevrier, Rouzier, Carton, Savva-Bordalo,
Magalhães, Borges, Wolf, Becker, Niklas,
Guergova-Kuras and Hall. This is an open-
access article distributed under the terms of
the [Creative Commons Attribution License
\(CC BY\)](https://creativecommons.org/licenses/by/4.0/). The use, distribution or
reproduction in other forums is permitted,
provided the original author(s) and the
copyright owner(s) are credited and that
the original publication in this journal is
cited, in accordance with accepted
academic practice. No use, distribution or
reproduction is permitted which does not
comply with these terms.

Ovarian Real-World International Consortium (ORWIC): A multicentre, real-world analysis of epithelial ovarian cancer treatment and outcomes

Sue Cheeseman¹, Bethany Levick^{1,2}, Will Sopwith^{1,2},
Hayley Fenton^{1,2}, Eun Ji Nam³, DongKyu Kim^{4,5}, Subin Lim⁵,
Elodie Martin⁶, Jean-Sébastien Frenel⁷, François Bocquet⁸,
Paul Kubelac⁹, Patriciu Achimas-Cadariu⁹, Catalin Vlad⁹,
Marion Chevrier¹⁰, Roman Rouzier¹¹, Matthieu Carton¹⁰,
Joana Savva-Bordalo¹², Marta Magalhães¹³, Marina Borges¹⁴,
Andrea Wolf¹⁵, Sven Becker¹⁵, Nicolas Niklas^{15,16},
Mariana Guergova-Kuras¹⁷ and Geoff Hall^{1*}

¹Leeds Cancer Center, Leeds Teaching Hospitals NHS Trust, Leeds, United Kingdom, ²Oncology Evidence Network, IQVIA, London, United Kingdom, ³Department of Obstetrics and Gynecology, Institute of Women's Medical Life Science, Yonsei Cancer Center, Severance Hospital, Yonsei University College of Medicine, Seoul, Republic of Korea, ⁴Department of Family Medicine, Yonsei University College of Medicine, Seoul, Republic of Korea, ⁵Real-World Evidence Team, ALYND, Yonsei University Health System, Seoul, Republic of Korea, ⁶Department of Biostatistics, Clinical Trial Sponsor Unit, Institut de Cancérologie de l'Ouest, Nantes-Angers, France, ⁷Oncology Department, Institut de Cancérologie de l'Ouest, Center for Research in Cancerology and Immunology, INSERM UMR 1232, Nantes University and Angers University, Nantes-Angers, France, ⁸Data Factory and Analytics Department, Institut de Cancérologie de l'Ouest, Law and Social Change Laboratory, Faculty of Law and Political Sciences, CNRS UMR 6297, Nantes University, Nantes-Angers, France, ⁹The Oncology Institute "Prof. Dr. Ion Chiricuta", Iuliu Hatieganu University of Medicine and Pharmacy, Cluj Napoca, Romania, ¹⁰Department of Biostatistics, Institut Curie, Paris Sciences et Lettres (PSL) University, Paris, France, ¹¹Department of Breast and Gynecological Surgery, Institut Curie, Paris, France, ¹²Department of Medical Oncology, Portuguese Oncology Institute of Porto (IPO-Porto) Porto, Porto, Portugal, ¹³Cancer Epidemiology Group-Research Center, IPO Porto, Comprehensive Cancer Center (Porto.CCC), RISE@CI-IPOP (Health Research Network), Porto, Portugal, ¹⁴Management, Outcomes Research and Economics in Healthcare Group-Research Center, IPO Porto, Comprehensive Cancer Center (Porto.CCC), RISE@CI-IPOP (Health Research Network), Porto, Portugal, ¹⁵Internal Medicine, Universitätsklinikum Frankfurt am Main, Frankfurt, Germany, ¹⁶Oncology Evidence Network, IQVIA Commercial GmbH and Co. OHG, Frankfurt am Main, Frankfurt, Germany, ¹⁷Oncology Evidence Network, IQVIA, La Défense, France

Introduction: Much drug development and published analysis for epithelial ovarian cancer (EOC) focuses on early-line treatment. Full sequences of treatment from diagnosis to death and the impact of later lines of therapy are rarely studied. We describe the establishment of an international network of cancer centers configured to compare real-world treatment pathways in UK, Portugal, Germany, South Korea, France and Romania (the Ovarian Real-World International Consortium; ORWIC).

Methods: 3344 patients diagnosed with EOC (2012-2018) were analysed using a common data model and hub and spoke programming approach applied to existing electronic medical records. Consistent definition of line of therapy between sites and an efficient approach to analysis within the limitations of local information governance was achieved.

Results: Median age of participants was 53–67 years old and 5–29% were ECOG >1. Between 62% and 84% of patients were diagnosed with late-stage disease (FIGO III–IV). Sites treating younger and fitter patients had higher rates of debulking surgery for those diagnosed at late stage than sites with older, more frail patients. At least 21% of patients treated with systemic anti-cancer therapy (SACT) had recurrent disease following second-line therapy (2L); up to 11 lines of SACT treatment were recorded for some patients. Platinum-based SACT was consistently used across sites at 1L, but choices at 2L varied, with hormone therapies commonly used in the UK and Portugal. The use (and type) of maintenance therapy following 1L also varied. Beyond 2L, there was little consensus between sites on treatment choice: trial compounds and unspecified combinations of other agents were common.

Discussion: Specific treatment sequences are reported up to 4L and the establishment of this network facilitates future analysis of comparative outcomes per line of treatment with the aim of optimizing available options for patients with recurrent EOC. In particular, this real-world network can be used to assess the growing use of PARP inhibitors. The real-world optimization of advanced line treatment will be especially important for patients not usually eligible for involvement with clinical trials. The resources to enable this analysis to be implemented elsewhere are supplied and the network will seek to grow in coverage of further sites.

KEYWORDS

epithelial ovarian cancer, chemotherapy, debulking surgery, real-world, treatment, Europe

1 Introduction

Epithelial ovarian cancer (EOC) (including primary peritoneal cancer and fallopian tube cancer), is a gynecological malignancy resulting in at least 4,000 deaths in the UK and 140,000 deaths world-wide each year (1, 2). EOC is a heterogeneous disease, comprising several morphological or histological types with distinct epidemiologic, molecular, and clinical features. Surveillance data suggests that survival outcomes differ between these morphologies (3) and the distribution of morphologies and experience of treatment differs internationally (4, 5).

The optimal management of EOC is surgical cytoreduction (debulking) followed by chemotherapy. The outcome of surgery (i.e. volume of residual disease) remains one of the most important predictors of survival, and neoadjuvant chemotherapy may be considered where the likelihood of optimal debulking is in doubt or is associated with unacceptable morbidity (6). For many years, primary treatment regimens have been a combination of platinum-based chemotherapy and taxane (such as paclitaxel) (6). Bevacizumab (a monoclonal antibody binding vascular endothelial growth factor) has demonstrated some modest improvement on PFS when given in combination with intravenous chemotherapy and as a maintenance therapy and gains in overall survival in high-risk stage III–IV patients with residual disease and ascites (7, 8). Nevertheless, bevacizumab was authorized (in 2011) by the European Medicines Agency as a first and

second line treatment (in combination with chemotherapy) (9), with subsequent studies showing improved outcomes in platinum-sensitive (10–12) and platinum-resistant disease (13). Bevacizumab is now considered standard of care in many countries (14). More recently, patients with platinum-sensitive, relapsed ovarian cancer have been shown to derive significant benefit from the addition of a Poly-ADP-ribose polymerase (PARP) inhibitor as maintenance, especially (but not exclusively) with a germline or somatic mutation in BRCA1 or BRCA2 (15, 16). Several studies have also shown benefit of PARPi given as monotherapy for patients with multiple previous lines of treatment (17), but innate mechanisms of resistance (18) mean that effective combination therapies are also needed. Studies assessing the benefit of immune checkpoint inhibitors for recurrent disease are ongoing (19, 20).

Despite excellent responses to chemotherapy and surgery, only a small minority of patients achieve long-term cure whilst most patients experience relapse of their disease months or even years later and require further treatment (21). In addition to tumor biology/histology, number of prior lines of treatment and prior response, treatment of relapsed disease is determined by the time since the last platinum-based chemotherapy or the ‘platinum-free interval’ (PFI); patients relapsing at least six months since last platinum-based treatment are considered ‘platinum-sensitive’ and those relapsing earlier, ‘platinum-resistant’ (22). Given the advances in detection of relapsed disease and the emergence of new targeted therapies, some

authors argue that these traditional definitions are becoming a less reliable indication for treatment choices (17) and treatment for relapsed disease may become increasingly individualized. In 2015, a more generic algorithm was introduced to replace PFI: therapy-free interval (TFI) (23).

The impact of surgery for recurrent disease (secondary surgical cytoreduction) is uncertain, with recent trials apparently showing conflicting results (24, 25). Any benefit on overall survival (OS) depends upon complete resection (at secondary surgical cytoreduction), and likelihood of this outcome appears to be independently associated with individual patient performance score (PS), residual disease following *initial* debulking surgery and cancer stage at original diagnosis (26).

Clinical trials in EOC most often examine therapy at a particular phase of treatment, for example at first line following diagnosis or second line following first recurrence. Few, if any, major studies have examined the management of patients from diagnosis to death, reporting the sequence of treatment used and the impact and benefit achieved by each line of therapy. International comparison of treatment outside the context of clinical trials is also rare, particularly in the era of targeted therapy with PARP inhibitors, monoclonal antibodies and immune checkpoint inhibitors. There is a current unmet need to optimize treatment for recurrent EOC (27).

The present study aims to describe the characteristics of patients with EOC in a real-world setting treated in 7 cancer centers in 6 different countries across Europe and Asia, including their complete treatment pathways from diagnosis to last observation.

2 Materials and methods

2.1 Study design

The study is a retrospective observational cohort study, using electronic health record (EHR) data collected as part of standard patient care in participating treatment centers. Available data was a mix of structured data items and unstructured text recorded in clinical notes. Where necessary, structured data was enriched at each study site through manual curation of clinical notes by local clinical teams. The study uses a “hub and spoke” analytical approach, with participating sites locally executing shared analytical scripts that were centrally coded to a common data model (CDM). This approach followed established design principles, preventing the need for patient-level data to leave the sites, so allowing the study to be conducted across sites working under diverse data protection legislation (28). The study was locally approved by the ethics committee at each treatment center, in accordance with the Declaration of Helsinki guidelines for biomedical research.

2.2 Study population

Study sites were Leeds Teaching Hospitals Trust (‘LTHT’, Leeds, UK), Instituto Português de Oncologia Porto (‘IPO’, Porto, Portugal), Yonsei University Health System (‘Yonsei’, Seoul, South Korea), University Hospital Frankfurt am Main (‘Frankfurt’, Frankfurt am Main, Germany), Institut de Cancérologie Ouest (‘ICO’, Saint-

Herblain and Angers, France), Institut Curie (‘Curie’, Paris, France) and Institute of Oncology Prof Dr. Ion Chiricuta (‘Cluj’, Cluj-Napoca, Romania).

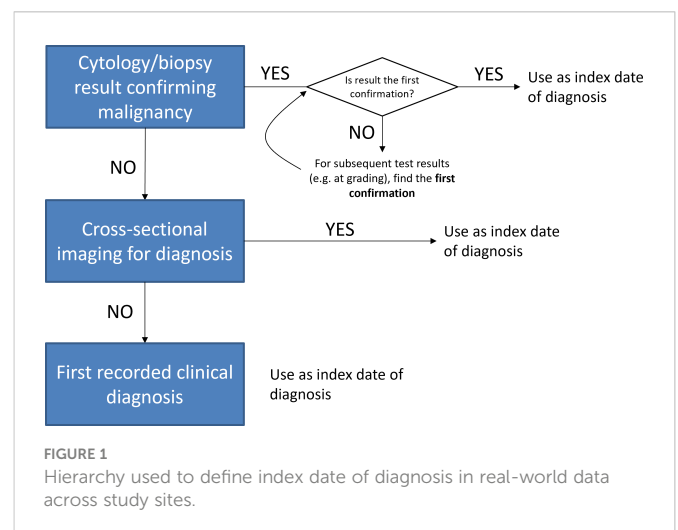
The study cohort was adult patients (at least 18 years old) with a first diagnosis of EOC (including all primary peritoneal carcinoma and fallopian tube cancer) or carcinosarcoma (mixed Mullerian tumor) between 1st January 2012 and 31st December 2018. Patients with sarcomas, stromal tumors and germ cell tumors or a clinically significant second primary malignancy (other than breast cancer and non-melanoma skin cancer) before or after the diagnosis of EOC were excluded (see Data Guide – [supplementary information](#)). Other exclusions were patients with a non-continuous care record following diagnosis (due to an episode of treatment being undertaken elsewhere and data not being available to the study site investigators) or patients opting out of local data sharing agreements or secondary research participation.

2.3 Study variables

The study period was from 1st January 2012 to 31st December 2019. Patient data was collected from the date of primary diagnosis of EOC (index date) until 31st December 2019, end of available data or death.

Index date was defined through an iterative consensus building process (see Results) between study site principal investigators. The final study definition was the first date of histological confirmation of malignancy by biopsy or cytology. Where histology or cytology was not done, the first date of cross-sectional imaging or first clinical diagnosis was used (Figure 1).

The study data guide detailing the CDM is available in [supplementary data](#) and the compilation of a data dictionary described in results. In summary, patient characteristics, tumor characteristics and treatment events (surgery, systematic anti-cancer therapy (SACT), radiotherapy) were extracted from each site’s EHR. Cancer morphology was defined as high-grade serous, low grade serous, serous with no grade defined, endometrioid, clear cell, mucinous, carcinosarcoma, mixed, undifferentiated, small cell carcinoma, missing, unknown or other. In general, the CDM maps



to international standards where available (e.g. ICD10, ICD-O-3). Otherwise, definitions were agreed through a similar review by study clinicians and statistical programmers.

2.4 Study analysis

Characterization of the patient cohort and sub-groups, and the therapy they received following diagnosis with EOC was through descriptive analyzes as follows:

- Clinical characteristics of the population (age, Eastern Cooperative Oncology Group (ECOG) score (29), BRCA variant status) and of their cancer (site, FIGO stage (30), morphology, grade)
- The frequency of debulking surgery and SACT use, and the number of lines of therapy (LoTs) of SACT administered
- The distribution of therapeutic and maintenance agents used at each LoT of SACT
- The time to next treatment (TTNT) from diagnosis to the second LoT - TTNT was used as a real-world proxy for progression following first LoT treatment
- Overall survival (OS) since diagnosis

Site level analysis was conducted according to consistent principles agreed between study sites. Site level results were summarized as aggregated tables or figures. Categorical variables were summarized as counts and percentages, and continuous variables as means, medians, interquartile ranges (IQR) and standard deviations (SD). Median time to event (TTNT and OS) was calculated using the Kaplan Meier product-limit method.

2.5 Data management and statistical programming

Each study site generated an analysis dataset from their EHR using the agreed CDM. Data were analyzed locally using a distributed R package ('openovary'), code that had been developed centrally at one study site (LTHT) [R version 3.6.3 (31)]. Aggregated outputs were disseminated amongst the network PIs for review. All patient level data was retained within local hospital systems.

3 Results

3.1 Developing a common data model

3.1.1 Common derivation of index date and line of therapy

All data extraction and management were done locally at each study site. To ensure consistency of definition, the lead PI developed 3 realistic but fictitious patient treatment pathways. Pathways included surgery, SACT (including maintenance therapy) and radiography events. From these scenarios, each PI was asked to parse the described courses of treatment into distinct programs of related events and identify the most appropriate index date for the definition of

outcome. Each site's assessment was independently recorded with the lead PI (Leeds) and a consolidated summary of views was prepared. Areas of difference in perspective on treatment program and index date were discussed on a research call between PIs until consensus of study definitions was reached.

The consensus reached on appropriate classification of index date is shown (Figure 1). Regarding treatment program, there was baseline agreement between sites on the grouping of real-world events into distinct treatment programs. However, grouping of specific drug regimens into distinct programs was more diverse between sites, and sometimes varied between practitioners within individual treatment centers. From the consensus reached, distinct LoTs and maintenance were defined before data extraction and analysis.

Regarding surgery, perspectives differed between sites on the definition and recording of surgical events in EHRs. Areas of particular focus included the distinction within existing data systems between significant biopsy and cytoreduction, the coding of patients for whom surgery was initiated but a full debulking procedure was not possible and the grading of residual disease. Some study sites had extensive surgical procedure metrics (for example, time in theatre, associated complications) that were mapped in the final CDM but could not be collected from every site. From the consensus reached through PI discussion, a data dictionary and CDM were developed.

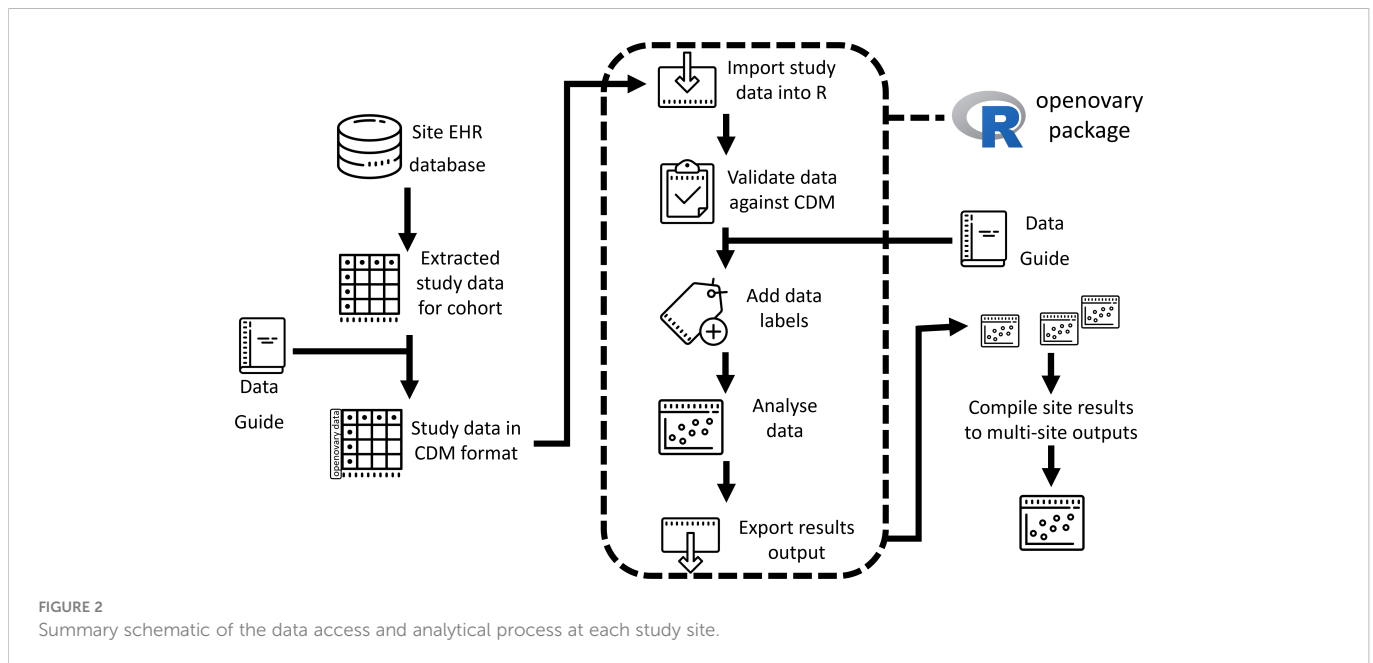
3.1.2 Compilation of data dictionary and hub and spoke analytical code approach

Legislation governing the protection of personal and healthcare data differs between the host nations of the included study sites. Centrally coded scripts were produced to allow distributed analysis, in preference to the time cost of establishing multiple data sharing agreements. Analytical aims and outputs were first agreed between the clinical and data teams before constructing the necessary CDM. The definition of final output tables, including the most appropriate groupings and stratifications of the study cohort, was agreed iteratively over sequential data releases.

Sites were provided with a data guide (see [supplementary data](#)) detailing variable-level derivations and validation rules, general data coding principles, and conversions/codes from international coding systems. A bespoke package of analysis scripts was programmed centrally (at LTHT), designed to validate each site's data against the CDM and generate standard outputs of tables and time to event analyzes. The package ('openovary' available in [supplementary data](#)) includes functions, numerical summaries and Kaplan-Meier analysis of overall survival. Each study site translated their local data to the study CDM before analysis using the openovary package (Figure 2). The resulting analytical output was presented for each site.

3.2 Patient characteristics

The total study cohort identified across the research network numbered 3344 patients diagnosed with EOC between 1st January 2012 and 31st December 2018. The median age of patients diagnosed with EOC ranged from 53 to 67 years old across the study sites (Table 1). Patients diagnosed at Cluj (Romania) and Yonsei (South Korea) were, in general, younger with 65.1% and 74.5% (respectively)



first diagnosed before the age of 60 years old. The oldest cohort was described in LTHT (UK), where 26.2% of patients were diagnosed at 75 years old or older. Distribution of ECOG status varied considerably across sites, and cohorts with higher median age tended to have a higher proportion of patients with ECOG of 2 or higher. Advanced stage disease (FIGO III or IV) was also more commonly diagnosed at sites with higher median age.

Within the definition of EOC, the distribution of specific tumor sites was markedly different for some study sites. Although malignancy of the ovary (ICD-10 C56) predominated in the research network, primary peritoneal cancer (C48) was commonly the diagnosis recorded in LTHT (UK) and Curie (France). The most common morphology of EOC tumor at all study sites was high grade serous. The proportions of study cohort where data was missing or unknown within site EHRs also varied across sites and by variable (Table 1).

The proportion of patients tested for BRCA at EOC diagnosis ranged from 16.1% (72/446; Cluj, Romania) to 68.9% (295/428; Curie, France), indicating different testing practices across the network (Table 2). Between 2.3% and 33.3% of patients tested for BRCA were found to possess a pathogenic variant, which was most commonly germline BRCA1.

3.3 Surgical outcome

Where early-stage disease (FIGO I-II) was diagnosed, at least 75% of patients had complete resection verified as an outcome following debulking surgery (Figure 3) (in all but two study sites; outcome of surgery was recorded less frequently for patients at Yonsei and not available for Curie). Where late-stage disease (FIGO III-IV) was diagnosed, debulking surgery was less frequently recorded and residual disease post-surgery was more common. Patients at IPO and LTHT were the least likely to undergo debulking surgery at late stage (Figure 3). Across all sites, late-stage patients undergoing

debulking surgery appeared to be younger, less likely to have stage IV disease and more likely to have an ECOG score of less than 2, when compared with late-stage patients not undergoing debulking surgery (Table 3).

3.4 Treatment with SACT

The proportion of patients treated with SACT following diagnosis ranged from 65.7% (176/268; IPO) to 99.2% (511/515; LTHT), with all sites except IPO treating at least 87% (Figure 4). Of those treated with SACT, at least 50% went on to receive a second LoT in all sites except Yonsei, where the proportion was 42.6%. Proportions of SACT-treated patients receiving 3L treatment ranged from 21.1% (26/123; Frankfurt) to 37.0% (246/664; ICO) and the maximum number of LoT recorded for a patient in the study cohort was 11 (Cluj and Yonsei). Patients were least likely to be treated beyond 3L in Frankfurt.

Platinum chemotherapy was used as 1L treatment almost exclusively across sites, with the exception of LTHT, where 5.7% (29/511) of patients received a trial drug or other chemotherapy (Figure 5). Platinum was most frequently used in combination with another therapy (usually a taxane) and use as monotherapy varied across sites, with patients diagnosed at LTHT most frequently receiving this at 1L (20.0% of patients, 102/511). Treatment classes used at 2L were more diverse than at 1L, with platinum use across sites ranging from 42.0% (37/88; IPO) to 85.5% (53/62; Frankfurt). The proportion of patients receiving a trial drug or 'other' chemotherapy at 2L was notable across all sites (between 19.3% (65/336; Yonsei) and 43.2% (38/88; IPO)), but regular use of hormone monotherapy was more restricted to LTHT and IPO. All sites except Yonsei and Frankfurt included some patients treated with a taxane at 2L, sometimes in combination with another agent.

Following 1L treatment, the proportion of patients receiving maintenance therapy varied between 2.3% (9/390; Cluj) and 62.6%

TABLE 1 Characteristics of ovarian cancer patients treated at 7 participating study sites between 2012 and 2018.

| | | Cluj | | Curie | | Frankfurt | | ICO | | IPO | | LTHT* | | Yonsei | |
|--------------------|-------------------------------------|-------|-------|-------|-------|-----------|-------|-------|-------|-------|-------|-------|-------|--------|-------|
| | Cohort | 446 | | 428 | | 140 | | 696 | | 268 | | 515 | | 851 | |
| Age (years) | Median | 55 | | 63 | | 59 | | 65 | | 66 | | 67 | | 53 | |
| | Q1-Q3 | 46-63 | | 52-71 | | 51-68 | | 56-72 | | 57-74 | | 58-75 | | 46-61 | |
| Age Group (years) | <45 | 81 | 18.2% | 46 | 10.7% | 17 | 12.1% | 45 | 6.5% | 12 | 4.5% | 20 | 3.9% | 166 | 19.5% |
| | 45-59 | 209 | 46.9% | 127 | 29.7% | 54 | 38.6% | 174 | 25.0% | 75 | 28.0% | 125 | 24.3% | 440 | 51.7% |
| | 60-74 | 139 | 31.2% | 193 | 45.1% | 51 | 36.4% | 329 | 47.3% | 114 | 42.5% | 235 | 45.6% | 217 | 25.5% |
| | 75+ | 17 | 3.8% | 62 | 14.5% | 18 | 12.9% | 148 | 21.3% | 67 | 25.0% | 135 | 26.2% | 28 | 3.3% |
| ECOG | 0 - Normal | 197 | 49.7% | 60 | 46.9% | 26 | 46.4% | 202 | 38.2% | 109 | 50.9% | 143 | 35.1% | 211 | 74.8% |
| | 1 - Light Work | 179 | 45.2% | 48 | 37.5% | 23 | 41.1% | 243 | 45.9% | 49 | 22.9% | 147 | 36.1% | 56 | 19.9% |
| | 2 - Ambulatory >50% | 16 | 4.0% | 14 | 10.9% | 4 | 7.1% | 66 | 12.5% | 29 | 13.6% | 69 | 17.0% | 14 | 5.0% |
| | 3 - Ambulatory <50% | 4 | 1.0% | 6 | 4.7% | 3 | 5.4% | 13 | 2.5% | 13 | 6.1% | <50 | | 1 | 0.4% |
| | 4 - Continuous Care | 0 | | 0 | | 0 | | 5 | 0.9% | 14 | 6.5% | <6 | | 0 | |
| | Not available | 50 | NA | 300 | NA | 84 | NA | 167 | NA | 54 | NA | 108 | NA | 569 | NA |
| Primary tumor site | Ovary (C56) | 423 | 94.8% | 326 | 76.2% | 133 | 95.0% | 682 | 98.0% | 227 | 84.7% | 307 | 59.6% | 790 | 92.8% |
| | Fallopian tube (C57) | 22 | 4.9% | 41 | 9.6% | 6 | 4.3% | 4 | 0.6% | 40 | 14.9% | 38 | 7.4% | 23 | 2.7% |
| | Primary peritoneal: mullerian (C48) | 1 | 0.2% | 61 | 14.3% | 1 | 0.7% | 10 | 1.4% | 1 | 0.4% | 170 | 33.0% | 38 | 4.5% |
| | Missing/Not known | 0 | NA | 0 | NA | 0 | NA | 0 | NA | 0 | NA | 0 | NA | 0 | NA |
| Tumor FIGO stage | I | 101 | 22.6% | 35 | 11.0% | 21 | 15.4% | 73 | 12.5% | 39 | 15.2% | 56 | 10.9% | 232 | 29.4% |
| | II | 37 | 8.3% | 18 | 5.7% | 8 | 5.9% | 27 | 4.6% | 18 | 7.0% | <30 | | 68 | 8.6% |
| | III | 259 | 58.1% | 149 | 46.9% | 72 | 52.9% | 323 | 55.2% | 106 | 41.2% | 293 | 57.0% | 279 | 35.3% |
| | IV | 49 | 11.0% | 116 | 36.5% | 35 | 25.7% | 162 | 27.7% | 94 | 36.6% | 140 | 27.2% | 211 | 26.7% |
| | Missing/Unknown | 0 | NA | 110 | NA | 4 | NA | 111 | NA | 11 | NA | <6 | NA | 61 | NA |
| Tumor morphology | High grade serous | 288 | 64.6% | 243 | 56.8% | 87 | 62.1% | 472 | 67.8% | 103 | 38.4% | 350 | 68.0% | 442 | 51.9% |
| | Endometrioid | 32 | 7.2% | 12 | 2.8% | 12 | 8.6% | 22 | 3.2% | 15 | 5.6% | 43 | 8.3% | 97 | 11.4% |
| | Clear Cell | 10 | 2.2% | 19 | 4.4% | 4 | 2.9% | 28 | 4.0% | 20 | 7.5% | 9 | 1.7% | 99 | 11.6% |
| | Mucinous | 28 | 6.3% | 17 | 4.0% | 7 | 5.0% | 14 | 2.0% | 13 | 4.9% | 15 | 2.9% | 68 | 8.0% |
| | Low grade serous | 43 | 9.6% | 70 | 16.4% | 7 | 5.0% | 18 | 2.6% | 13 | 4.9% | 25 | 4.9% | 24 | 2.8% |
| | Serous, unknown grade | 6 | 1.3% | 0 | | 9 | 6.4% | 3 | 0.4% | 31 | 11.6% | 20 | 3.9% | 24 | 2.8% |
| | Mixed | 23 | 5.2% | 15 | 3.5% | 0 | | 12 | 1.7% | 10 | 3.7% | 8 | 1.6% | 13 | 1.5% |
| | Carcinosarcoma | 1 | 0.2% | 8 | 1.9% | 0 | | 9 | 1.3% | 11 | 4.1% | 36 | 7.0% | 15 | 1.8% |
| | Other/Undifferentiated/NK | 12 | 2.7% | 42 | 9.8% | 14 | 10.0% | 117 | 16.8% | 51 | 19.0% | <6 | | 50 | 5.9% |
| | Small Cell | 3 | 0.7% | 2 | 0.5% | 0 | | 1 | 0.1% | 1 | 0.4% | <6 | | 19 | 2.2% |
| Tumor grade | Well differentiated | 77 | 18.6% | 18 | 5.9% | 13 | 10.5% | 42 | 8.4% | 27 | 16.7% | 34 | 7.4% | 82 | 9.6% |
| | Moderately differentiated | 54 | 13.1% | 26 | 8.6% | 24 | 19.4% | 38 | 7.6% | 12 | 7.4% | 13 | 2.8% | 153 | 18.0% |
| | Poorly differentiated | 282 | 68.3% | 259 | 85.5% | 87 | 70.2% | 426 | 85.0% | 123 | 75.9% | 414 | 89.8% | 428 | 50.3% |
| | Missing/Invalid | 33 | NA | 125 | NA | 16 | NA | 190 | NA | 106 | NA | 54 | NA | 188 | NA |

*small numbers masked for this center; NA, not applicable.

TABLE 2 BRCA testing per site and proportion of pathogenic variants ('variant') identified.

| | Cluj (n=446) | | | Curie (n=428) | | | ICO (n=696) | | | IPO (n=268) | | | LTHT (n=515) | | | Yonsei (n=851) | | |
|------------------------------|--------------|---------|-----------|---------------|---------|-----------|-------------|---------|-----------|-------------|---------|-----------|--------------|---------|-----------|----------------|---------|-----------|
| | Tests | Variant | % variant | Tests | Variant | % variant | Tests | Variant | % variant | Tests | Variant | % variant | Tests | Variant | % variant | Tests | Variant | % variant |
| Germline BRCA1 | 72 | 24 | 33.3% | 295 | 41 | 13.9% | 356 | 52 | 14.6% | 131 | 7 | 5.3% | 230 | 24 | 10.4% | 444 | 69 | 15.5% |
| Germline BRCA2 | 72 | 4 | 5.6% | 282 | 23 | 8.2% | 344 | 17 | 4.9% | 131 | 7 | 5.3% | 217 | 19 | 8.8% | 447 | 52 | 11.6% |
| Year routine testing started | 2016 | | | 2009 | | | 2008 | | | 2015 | | | 2016 | | | 2002 | | |
| Somatic BRCA1 | 8 | - | | 99 | 15 | 15.2% | 48 | 4 | 8.3% | 131 | 3 | 2.3% | * | <6 | | 175 | 12 | 6.9% |
| Somatic BRCA2 | 8 | - | | 94 | 7 | 7.4% | 46 | 2 | 4.3% | 131 | 3 | 2.3% | * | <6 | | 175 | 8 | 4.6% |
| Year routine testing started | 2016 | | | 2014 | | | 2014 | | | 2015 | | | 2015 | | | 2017 | | |

Data not available in Frankfurt. *Number of somatic tests could not be reliably distinguished from germline testing in LTHT. BRCA testing may have been performed at diagnosis or at relapse events and these time points are not distinguished in this data.

(77/123; Frankfurt) and bevacizumab was the most common single therapy used (Figure 6). Alternative maintenance therapies of note following 1L were hormone monotherapy (IPO) and PARPi (Frankfurt) and combined maintenance therapy (usually bevacizumab combined with hormone or with PARPi) was frequently used at LTHT. Overall, between 42.6% (336/788; Yonsei) and 60.0% (398/664; ICO) of patients treated at 1L remained alive and received further lines of treatment. Patients treated with maintenance therapy appeared to be more likely to receive further SACT treatment than those who were not (range between 50.0% (44/88; Yonsei) and 75.0% (99/132; LTHT)). Death following 1L treatment was most frequently reported as outcome for patients diagnosed at LTHT (19.8%, 101/511) and IPO (18.8%, 33/176) (Figure 6).

In addition to the distribution of maintenance therapies described after 1L treatment (above), PARPi was more commonly included as maintenance therapy after 2L, particularly for patients diagnosed at Frankfurt (Figure 6). PARPi was exclusively used as maintenance following platinum treatment (or trial compounds including platinum). In most sites, bevacizumab (including bevacizumab combinations) remained more commonly used as maintenance following 2L than PARPi, except for Frankfurt (where PARPi use was particularly high) and IPO (where bevacizumab and PARPi use were similar).

For patients receiving more than 2L treatment, use of taxane monotherapy increased in all sites, except for Frankfurt. Use of trial compounds and 'other' chemotherapy also increased in most sites, as the proportion of patients receiving platinum combinations decreased (Figure 6). However, LTHT differs from other sites in its reduced use of trial compounds at 3L and notable use of platinum monotherapy at 3L (and 4L). Use of maintenance therapy after 3L decreased in all sites, except for Yonsei where 23.8% (50/210) of patients treated at 3L subsequently received bevacizumab maintenance.

3.5 Time to event analysis

Median OS in the overall cohort ranged from 25.5 months (IPO) to 65.5 months (Cluj) (Table 4). Apart from IPO, estimated median OS for patients with high-grade serous disease appeared to be similar at each site. Available data did not allow a statistical comparison of OS between sites. In the absence of systematic coded data on progression events, time between diagnosis and second line of SACT treatment initiation (time to 2L) was used as a proxy for disease progression. In the overall cohort, time to 2L ranged from 14.3 months (IPO) to 65.9 months (Yonsei). Median time to 2L was similar or shorter for patients with high grade serous disease, except for in IPO.

4 Discussion

We describe a real-world outcomes study investigating treatment patterns of EOC in several European cancer centers and one from South Korea. This unfunded study was achieved using a hub and spoke analysis approach based on a common data model defined through clinical consensus between study sites. This approach ensured an efficient delivery of objectives across sites under different jurisdictions of GDPR as a first step to a full comparative outcomes study of treatment internationally.

TABLE 3 Characteristics of patients with late-stage disease at diagnosis, by receipt of debulking surgery.

| | Cluj | | Curie | | Frankfurt | | ICO | | IPO | | LTHT | |
|--------------------|--------------|------------|--------------|------------|--------------|------------|--------------|------------|--------------|------------|--------------|------------|
| | no debulking | debulking | no debulking | debulking | no debulking | debulking | no debulking | debulking | no debulking | debulking | no debulking | debulking |
| Late-stage cohort | 22 | 286 | 39 | 226 | 14 | 93 | 139 | 346 | 97 | 103 | 186 | 247 |
| Median age (Q1-Q3) | 64 (56-69) | 55 (48-63) | 73 (67-79.5) | 63 (53-70) | 67 (58-79) | 59 (52-68) | 70 (63-78) | 65 (57-71) | 72 (61-77) | 63 (55-71) | 74 (65-79) | 65 (56-72) |
| Stage IV | 8 | 36.4% | 29 | 74.4% | 7 | 28 | 83 | 79 | 68 | 26 | 85 | 55 |
| ECOG 0-1 | 17 | 94.4% | 13 | 72.2% | 0 | 33 | 76 | 261 | 31 | 77 | 68 | 159 |
| ECOG 2-4 | 1 | 5.6% | 5 | 27.8% | 1 | 5 | 40 | 34.5% | 42 | 10 | 74 | 39 |
| ECOG NK | 4 | NA | 21 | NA | 13 | 55 | 23 | NA | 24 | 16 | 44 | 49 |
| Primary debulking | | | | | | | | | | | | |
| Interval debulking | | | | | | | | | | | | |
| Delayed debulking | | | | | | | | | | | | |
| Missing/Unknown | | | | | | | | | | | | |

Yonsei not shown as all late-stage patients received debulking surgery. NA, not applicable.

Profiles of patient cohorts differed between study sites, with patients diagnosed in the Romanian (Cluj) and South Korean (Yonsei) centers being younger and tending to be diagnosed at an earlier stage of disease and with better ECOG performance score. Patients diagnosed in the UK center (LTHT) had the oldest age profile at diagnosis and this corresponded to advanced stage disease being diagnosed most frequently at this site, amongst patients with the poorest ECOG. Although the reported differences in patient profiles at diagnosis may in part reflect underlying population structure [it is notable that of all the study site countries, South Korea has the lowest proportion of women over 65 years of age in the general population (32)] or culture of health-seeking behavior, they might also indicate different national or even local health policy. It is notable that a significant proportion of the cohort studied would not usually be eligible for enrolment in clinical trials, meaning that real-world analysis of treatment patterns and outcomes may be of significant patient benefit.

Although the diverse use of debulking surgery as primary treatment for patients diagnosed at late stage appeared to be one such policy difference, examination of underlying clinical profiles suggests in fact a consistency of approach between study sites. The centers least likely to treat late-stage patients with debulking surgery also had the highest median age of overall patient cohort, and within the late-stage cohorts (regardless of study site) it tended to be older patients with poorer ECOG scores and higher rates of Stage IV disease that did not receive surgery. This presumably reflects a widespread selective use of surgery for those where success was most probable, the apparent differences between centers being explained by underlying patient profile rather than difference in policy.

Choice of platinum SACT at 1L was consistent across jurisdictions, reflecting an established evidence base for its use. The choice of platinum as monotherapy may be made where there is high risk of neurotoxicity following treatment (especially amongst older and frailer patients) (33, 34), and the particular use of monotherapy in LTHT is consistent with this cancer center having the highest proportion of patients (among the study sites) who were over 60 years old at diagnosis. Use of subsequent 1L maintenance therapy may be influenced by availability of drugs in each health system represented, efficacy of therapy for the patient cohort presenting and any side-effect profile that might steer clinician or patient choice. In Europe, the first PARPi, olaparib, was authorized in 2014 for 1L and 2L maintenance treatment (as monotherapy) of adult patients with relapsed, platinum-sensitive EOC (35) and its use for the study cohort in European centers, as reported here, is expected. However, olaparib was only approved in South Korea in 2019 (36) and this may explain its lack of reported use in this study.

Choice of 2L treatment has traditionally been directed by the PFI, the duration of response (up to progression) following completion of 1L platinum therapy and an indication of cancer sensitivity to platinum agents. Measures of PFI by center were not determined in this study, but the relatively high proportion of patients receiving 2L platinum at Frankfurt and Yonsei suggest higher proportions of patients with platinum-sensitive disease at these centers. Assuming similar timescales of diagnosis to treatment in each center, the increased median time to 2L reported here in Yonsei also support this observation. Hormone monotherapy was only used extensively in LTHT and IPO, as a 2L treatment option (and beyond). Studies have

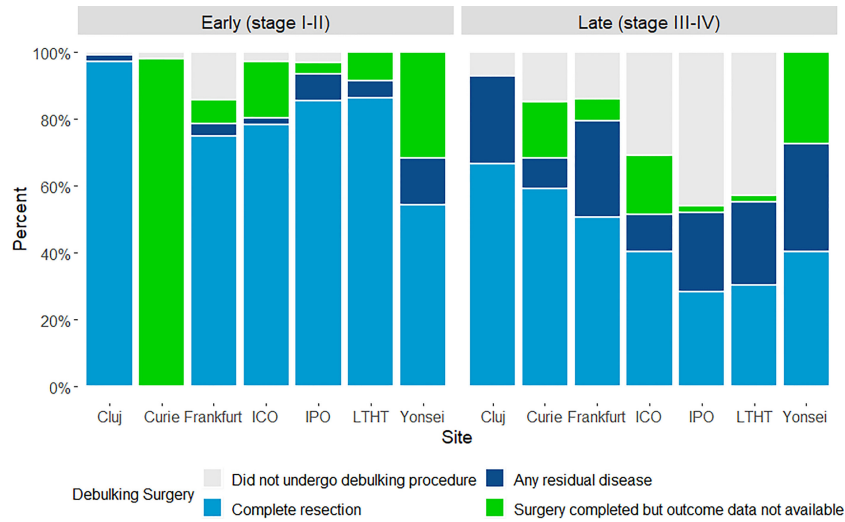


FIGURE 3 Outcome achieved following primary surgical debulking surgery, by study site and FIGO disease stage.

indicated improved outcomes using hormone therapy for patients with low-grade serous (LGS) disease (37), but the level of LGS is similar across centers in this study and use of hormone therapy may be a localized clinical preference (38). In LTHT, hormone therapy is often used for patients with low volume progressive disease (and reduced symptoms) to avoid more aggressive treatment with chemotherapy and potentially prolong the platinum free interval (SC; personal communication).

Beyond 2L, the inevitable development of resistance to platinum in patients with multiple recurrence means that PFI becomes a less significant marker for choice of therapy (27) and the decreasing use of platinum beyond 2L described here probably reflects this reduced sensitivity and response. Beyond trial-evidenced 2L treatments, patients are generally treated for ‘as long as possible’ to control disease (39), an approach perhaps evident here in all study sites, with some patients treated up to an eleventh line of SACT. In particular, a diversity of clinical trial study designs and sub-groups compared, and the lack of robust HRD testing in widespread use, has

hampered the development of treatment algorithms for patients with non-BRCA mutated disease (14). There is little published evidence on the extent of treatment for recurrent disease and the high proportion of ‘trial/other chemotherapy’ reported here beyond 2L reflects the wide range of combinations and approaches tried in different centers (too many to reasonably categorize in our analysis). In this study, 978 patients were treated at 3L (32.1% of all those treated with SACT) and 563 at 4L (18.5%), showing the level of unmet treatment need for recurrent EOC in the real-world. Future analysis of this study cohort aims to better define the characteristics of this long-treated group of patients, with the hope that outcomes can be improved.

PARPi authorization in Europe was extended in 2018 for use as monotherapy following at least two lines of platinum treatment and in 2020 as maintenance in combination with bevacizumab (for patients with homologous recombination deficient (HRD)-positive advanced disease) (40). Data from the SOLO3 trial suggest that treatment of platinum-resistant BRCA-mutated disease with monotherapy PARPi is superior to non-platinum chemotherapy for

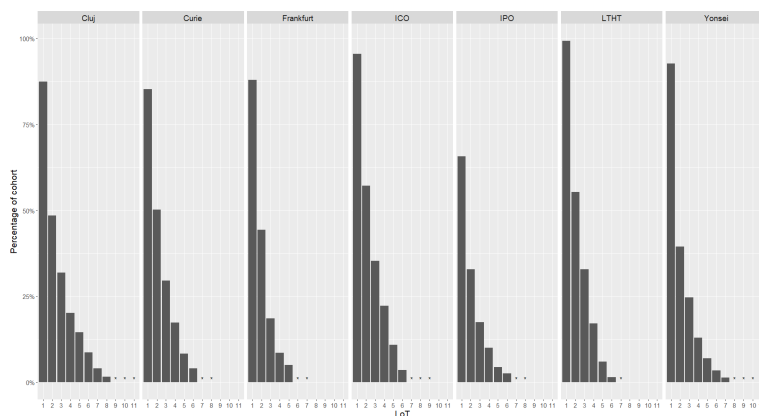


FIGURE 4 Proportion of cohort receiving systemic anti-cancer therapy (SACT) following diagnosis, including treatment attrition through successive lines of therapy (LoT), by study site. *indicates where cohort treated was <6 patients.

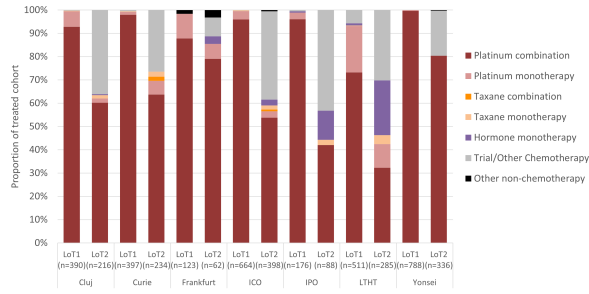


FIGURE 5 Proportion of SACT class received at first and second LoT, by study site.

those not previously receiving PARPi (41), but given the increasingly widespread use of PARPi as 1L maintenance, opportunities for its use in this way are limited (42). The study cohort reported mostly pre-dates these developments in the use of PARPi, and the use of these

agents is restricted here to maintenance. The reason for the particularly strong adoption of PARPi maintenance in the German cancer center (in comparison to other European sites) is not known. A recent survey of treating clinicians in Germany found that side-

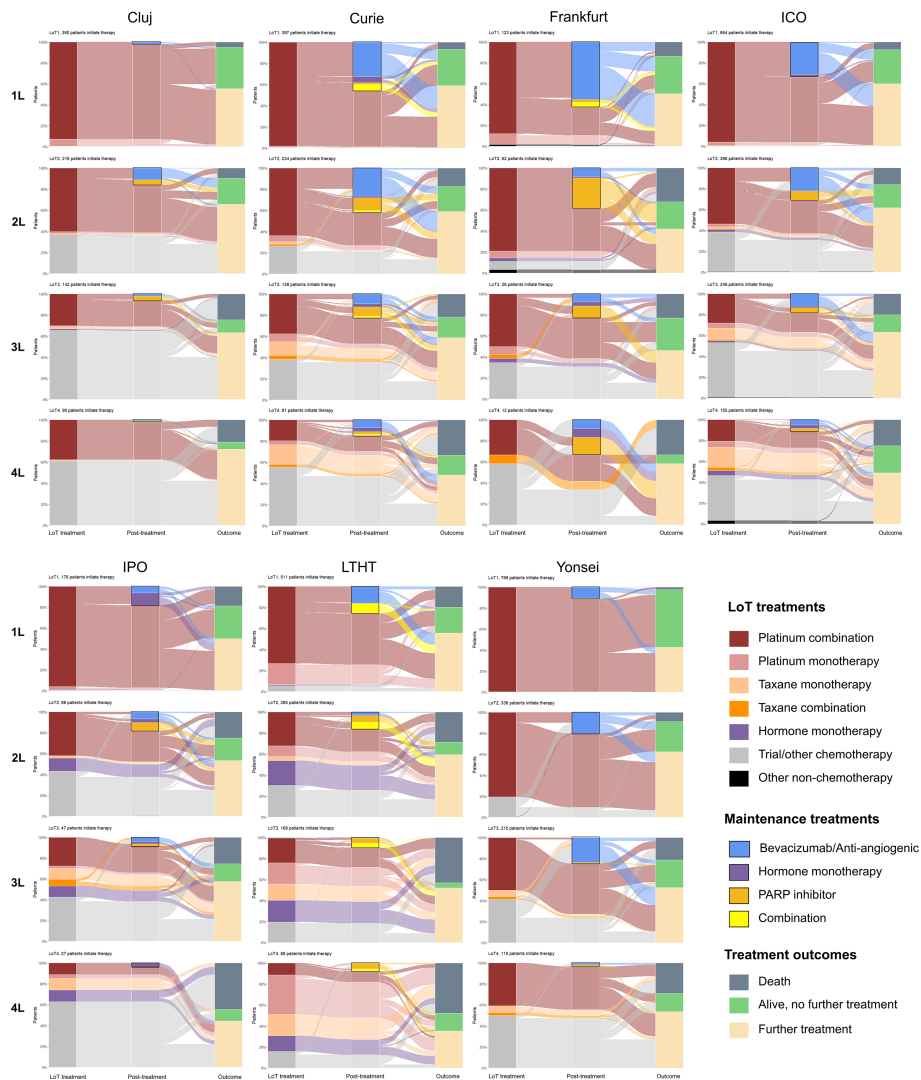


FIGURE 6 Treatment pathways and outcomes for the first 4 lines of SACT treatment (1L to 4L), by study site. Class of treatment regimen is shown in the left-hand column ('LoT treatment'), subsequent maintenance therapy (where used) is indicated in the middle column ('post treatment') by a solid outline and treatment outcome is in the right-hand column ('outcome').

TABLE 4 Kaplan Meier estimates (in months) of time from diagnosis to the initiation of 2L SACT treatment ('Time to 2L') and of overall survival, by study site and showing estimates for whole cohort and patients with high-grade serous disease ('HGS').

| | Cluj | | Curie | | Frankfurt | | ICO | | IPO | | LTHT | | Yonsei | |
|------------------------|--------|-------------|--------|-------------|-----------|-------------|--------|-------------|--------|-------------|--------|-------------|--------|-------------|
| | median | 95% CI | median | 95% CI | median | 95% CI | median | 95% CI | median | 95% CI | median | 95% CI | median | 95% CI |
| Time to 2L (all) | 34.0 | 28.3 - 44.6 | 38.5 | 35.5 - 46.9 | 32.5 | 26.9 - 42.3 | 22.1 | 20.2 - 23.7 | 14.3 | 13.3 - 17.2 | 16.5 | 15.1 - 18 | 65.9 | 50.8 - * |
| Time to 2L (HGS) | 27.0 | 23.2 - 30.7 | 30.2 | 26.5 - 36.1 | 29.4 | 23.3 - 35.4 | 20.8 | 19.5 - 23.2 | 17.7 | 14.9 - 22.4 | 15.4 | 14 - 16.7 | 30.8 | 25.2 - 37.7 |
| Overall survival (all) | 65.5 | 56.5 - 79.3 | 74.8 | 63.1 - * | 59.0 | 49.3 - * | 60.4 | 53.1 - * | 25.5 | 19.6 - 35.4 | 30.1 | 27.6 - 35.3 | * | |
| Overall survival (HGS) | 63.0 | 26.7 - 33.2 | 74.3 | 66.1 - * | 50.7 | 45.2 - * | 58.4 | 53.1 - 75.3 | 50.8 | 34.0 - * | 29.2 | 26.7 - 33.2 | * | |

*Overall survival estimates not reported because the estimated survival probability was above 50% or confidence interval could not be calculated.

effect profile and efficacy were the two main factors in their decision to use a PARPi (43) and the suspected high levels of platinum sensitivity in the German cohort (discussed above) may also be a factor. In two PARPi trials where quality of life indicators were included, no detrimental effect of PARPi maintenance therapy was shown (44).

This is the first report from an international collaboration established across 6 countries to investigate real-world treatment outcomes in EOC. The development of the CDM was a pragmatic approach to help establish the collaboration and demonstrate the potential to collect and compare high quality clinical data in EOC. Information on such a large real-world cohort (many of whom will not be represented in clinical trials) is crucial to deliver future patient benefit through optimized treatment approaches beyond 2L. The next stage of the partnership will seek to implement a more established CDM such as OMOP, developed through the Observational Health Data Sciences and Informatics (OHDSI) program, to facilitate the further expansion of the research network. A key limitation of the study is the information governance restriction on sharing and pooling patient-level data for analysis. To develop the analysis further, the collaboration is exploring the use of federated analytics to allow comparative outcome analysis.

Data availability statement

The data analyzed in this study is subject to the following licenses/restrictions: Routine clinical data from multiple cancer centers. Data not pooled. Requests to access these datasets should be directed to geoff.hall2@nhs.net.

Author contributions

All authors made substantial contributions to the conception or design of the work, but especially GH, MG-K, SC, WS, and BL. NN, AW, BL, HF, EM, MB, and PK acquired and analyzed data for the study. GH, SC, EJ, DK, SL, J-SF, FB, PK, PA-C, and CV provided

interpretation of data for the work. WS, HF, and MG-K drafted the manuscript with critical revision contributed by all authors. All authors provided approval for publication of the content and agree to be accountable for all aspects of the work in relation to accuracy or integrity.

Acknowledgments

Rita Calisto (IPO Porto), Maria José Bento (IPO Porto), Nina Snelling (LTHT).

Conflict of interest

Authors BL, WS, HF, NN and MG-K were employed by IQVIA Oncology Evidence Network.

The remaining authors declare that the research was conducted in the absence of any commercial or financial relationships that could be construed as a potential conflict of interest.

Publisher's note

All claims expressed in this article are solely those of the authors and do not necessarily represent those of their affiliated organizations, or those of the publisher, the editors and the reviewers. Any product that may be evaluated in this article, or claim that may be made by its manufacturer, is not guaranteed or endorsed by the publisher.

Supplementary material

The Supplementary Material for this article can be found online at: <https://www.frontiersin.org/articles/10.3389/fonc.2023.1114435/full#supplementary-material>

References

- Ovarian cancer statistics. Cancer Research UK (2015). Available at: <https://www.cancerresearchuk.org/health-professional/cancer-statistics/statistics-by-cancer-type/ovarian-cancer>.
- Cancer today (2022). Available at: <http://gco.iarc.fr/today/home>.
- Peres LC, Cushing-Haugen KL, Köbel M, Harris HR, Berchuck A, Rossing MA, et al. Invasive epithelial ovarian cancer survival by histotype and disease stage. *J Natl Cancer Inst* (2019) 111(1):60–8. doi: 10.1093/jnci/djy071
- Matz M, Coleman MP, Sant M, Chirlaque MD, Visser O, Gore M, et al. The histology of ovarian cancer: worldwide distribution and implications for international survival comparisons (CONCORD-2). *Gynecol Oncol* (2017) 144(2):405–13. doi: 10.1016/j.ygyno.2016.10.019
- Reid F, Bhatla N, Oza AM, Blank SV, Cohen R, Adams T, et al. The world ovarian cancer coalition every woman study: identifying challenges and opportunities to improve survival and quality of life. *Int J Gynecol Cancer* (2021) 31(2):238–244. doi: 10.1136/ijgc-2019-000983
- Kuroki L, Guntupalli SR. Treatment of epithelial ovarian cancer. *BMJ* (2020) 9;371:m3773. doi: 10.1136/bmj.m3773
- Oza AM, Cook AD, Pfisterer J, Embleton A, Ledermann JA, Pujade-Lauraine E, et al. Standard chemotherapy with or without bevacizumab for women with newly diagnosed ovarian cancer (ICON7): overall survival results of a phase 3 randomised trial. *Lancet Oncol* (2015) 16(8):928–36. doi: 10.1016/S1470-2045(15)00086-8
- Burger RA, Brady MF, Bookman MA, Fleming GF, Monk BJ, Huang H, et al. Incorporation of bevacizumab in the primary treatment of ovarian cancer. *N Engl J Med* (2011) 365(26):2473–83. doi: 10.1056/NEJMoa1104390
- EMA. Avastin. European Medicines Agency (2018). <https://www.ema.europa.eu/en/medicines/human/EPAR/avastin>
- Coleman RL, Brady MF, Herzog TJ, Sabbatini P, Armstrong DK, Walker JL, et al. Bevacizumab and paclitaxel-carboplatin chemotherapy and secondary cytoreduction in recurrent, platinum-sensitive ovarian cancer (NRG Oncology/Gynecologic oncology group study GOG-0213): a multicentre, open-label, randomised, phase 3 trial. *Lancet Oncol* (2017) 18(6):779–91. doi: 10.1016/S1470-2045(17)30279-6
- Aghajanian C, Blank SV, Goff BA, Judson PL, Teneriello MG, Husain A, et al. OCEANS: a randomized, double-blind, placebo-controlled phase III trial of chemotherapy with or without bevacizumab in patients with platinum-sensitive recurrent epithelial ovarian, primary peritoneal, or fallopian tube cancer. *J Clin Oncol Off J Am Soc Clin Oncol* (2012) 30(17):2039–45. doi: 10.1200/JCO.2012.42.0505
- Aghajanian C, Goff B, Nycum LR, Wang YV, Husain A, Blank SV. Final overall survival and safety analysis of OCEANS, a phase 3 trial of chemotherapy with or without bevacizumab in patients with platinum-sensitive recurrent ovarian cancer. *Gynecol Oncol* (2015) 139(1):10–6. doi: 10.1016/j.ygyno.2015.08.004
- Pujade-Lauraine E, Hilpert F, Weber B, Reuss A, Poveda A, Kristensen G, et al. Bevacizumab combined with chemotherapy for platinum-resistant recurrent ovarian cancer: The AURELIA open-label randomized phase III trial. *J Clin Oncol* (2014) 32(13):1302–8. doi: 10.1200/JCO.2013.51.4489
- Mirza MR, Coleman RL, González-Martín A, Moore KN, Colombo N, Ray-Coquard I, et al. The forefront of ovarian cancer therapy: update on PARP inhibitors. *Ann Oncol* (2020) 31(9):1148–59. doi: 10.1016/j.annonc.2020.06.004
- Ledermann J, Harter P, Gourley C, Friedlander M, Vergote I, Rustin G, et al. Olaparib maintenance therapy in platinum-sensitive relapsed ovarian cancer. *N Engl J Med* (2012) 366(15):1382–92. doi: 10.1056/NEJMoa1105535
- Pujade-Lauraine E, Ledermann JA, Selle F, GebSKI V, Penson RT, Oza AM, et al. Olaparib tablets as maintenance therapy in patients with platinum-sensitive, relapsed ovarian cancer and a BRCA1/2 mutation (SOLO2/ENGOT-Ov21): a double-blind, randomised, placebo-controlled, phase 3 trial. *Lancet Oncol* (2017) 18(9):1274–84. doi: 10.1016/S1470-2045(17)30469-2
- Buechel M, Herzog TJ, Westin SN, Coleman RL, Monk BJ, Moore KN. Treatment of patients with recurrent epithelial ovarian cancer for whom platinum is still an option. *Ann Oncol* (2019) 30(5):721–32. doi: 10.1093/annonc/mdz104
- Lord CJ, Ashworth A. Mechanisms of resistance to therapies targeting BRCA-mutant cancers. *Nat Med* (2013) 19(11):1381–8. doi: 10.1038/nm.3369
- Pujade-Lauraine E, Fujiwara K, Dychter SS, Devgan G, Monk BJ, Avelumab (anti-PD-L1) in platinum-resistant/refractory ovarian cancer: JAVELIN ovarian 200 phase III study design. *Future Oncol* (2018) 14(21):2103–13. doi: 10.2217/fon-2018-0070
- Lampert EJ, Zimmer A, Padgett M, Cimino-Mathews A, Nair JR, Liu Y, et al. Combination of PARP inhibitor olaparib, and PD-L1 inhibitor durvalumab, in recurrent ovarian cancer: a proof-of-Concept phase II study. *Clin Cancer Res* (2020) 26(16):4268–79. doi: 10.1158/1078-0432.CCR-20-0056
- Giornelli GH. Management of relapsed ovarian cancer: a review. *SpringerPlus* (2016) 5(1):1197. doi: 10.1186/s40064-016-2660-0
- Colombo N, Sessa C, du Bois A, Ledermann J, McCluggage WG, McNeish I, et al. ESMO-ESGO consensus conference recommendations on ovarian cancer: pathology and molecular biology, early and advanced stages, borderline tumours and recurrent disease†. *Ann Oncol Off J Eur Soc Med Oncol* (2019) 30(5):672–705. doi: 10.1093/annonc/mdw062
- Wilson MK, Pujade-Lauraine E, Aoki D, Mirza MR, Lorusso D, Oza AM, et al. Fifth ovarian cancer consensus conference of the gynecologic cancer InterGroup: recurrent disease. *Ann Oncol Off J Eur Soc Med Oncol* (2017) 28(4):727–32. doi: 10.1093/annonc/mdw663
- Harter P, Sehouli J, Vergote I, Ferron G, Reuss A, Meier W, et al. Randomized trial of cytoreductive surgery for relapsed ovarian cancer. *N Engl J Med* (2021) 385(23):2123–31. doi: 10.1056/NEJMoa2103294
- Coleman RL, Enserro D, Spirtos N, Herzog TJ, Sabbatini P, Armstrong DK, et al. A phase III randomized controlled trial of secondary surgical cytoreduction (SSC) followed by platinum-based combination chemotherapy (PBC), with or without bevacizumab (B) in platinum-sensitive, recurrent ovarian cancer (PSOC): A NRG Oncology/Gynecologic oncology group (GOG) study. *J Clin Oncol* (2018) 36(15_suppl):5501–1. doi: 10.1200/JCO.2018.36.15_suppl.5501
- Harter P, du BA, Hahmann M, Hasenburg A, Burges A, Loibl S, et al. Surgery in recurrent ovarian cancer: The arbeitgemeinschaft gynaekologische onkologie (AGO) DESKTOP OVAR trial. *Ann Surg Oncol* (2006) 13(12):1702–10. doi: 10.1245/s10434-006-9058-0
- Gupta S, Nag S, Aggarwal S, Rauthan A, Warriar N. Maintenance therapy for recurrent epithelial ovarian cancer: current therapies and future perspectives – a review. *J Ovarian Res* (2019) 12(1):103. doi: 10.1186/s13048-019-0579-0
- Curtis LH, Weiner MG, Boudreau DM, Cooper WO, Daniel GW, Nair VP, et al. Design considerations, architecture, and use of the mini-sentinel distributed data system. *Pharmacoepidemiol Drug Saf* (2012) 21(Suppl 1):23–31. doi: 10.1002/pds.2336
- ECOG-ACRIN Cancer Research Group. ECOG performance status scale (2022). Available at: <https://ecog-acrin.org/resources/ecog-performance-status/>.
- Berek JS, Renz M, Kehoe S, Kuma L, Friedlander M. Cancer of the ovary, fallopian tube, and peritoneum: 2021 update. *Int J Gynecol Obstet* (2021) 155(Suppl 1):61–85. doi: 10.1002/ijgo.13878
- R. *The r project for statistical computing*. Available at: <https://www.r-project.org/>.
- World Development Indicators. *DataBank* (2022). Available at: <https://databank.worldbank.org/reports.aspx?source=2&series=SP.POP.1564.TO.ZS&country=AFG>.
- Troso-Sandoval TA, Lichtman SM. Chemotherapy of ovarian cancer in elderly patients. *Cancer Biol Med* (2015) 12(4):292–301. doi: 10.7497/j.issn.2095-3941.2015.0077
- Efstathiou E, Dimopoulos MA, Bozas G, Kastiris E, Moulouopoulos LA, Rodolakis A, et al. Advanced epithelial ovarian cancer in the elderly: Chemotherapy tolerance and outcome. *Anticancer Res* (2007) 27(1B):611–7.
- EMA. *Lynparza recommended for approval in ovarian cancer*. European Medicines Agency (2018). Available at: <https://www.ema.europa.eu/en/news/lynparza-recommended-approval-ovarian-cancer>.
- Products|Drugs|Our Works|Ministry of food and drug safety (2022). Available at: https://www.mfds.go.kr/eng/brd/m_19/down.do?brd_id=eng0004&seq=70435&data_tp=A8file_seq=1.
- Paleari L, DeCensi A. Endocrine therapy in ovarian cancer: where do we stand? *Curr Opin Obstet Gynecol* (2018) 30(1):17–22. doi: 10.1097/GCO.0000000000000423
- Bei L, Silva AV, Petiz A, Pereira D, Sava-Bordalo J. Clinical benefit of hormonal therapy in advanced ovarian cancer. *European Journal of Gynaecological Oncology* (2020) 41(1):98–101. doi: 10.31083/j.ejgo.2020.01.4967.
- Lheureux S, Gourley C, Vergote I, Oza AM. Epithelial ovarian cancer. *Lancet* (2019) 393(10177):1240–53. doi: 10.1016/S0140-6736(18)32552-2
- EMA. *Lynparza*. European Medicines Agency (2018). Available at: <https://www.ema.europa.eu/en/medicines/human/EPAR/lynparza>.
- Penson RT, Valencia RV, Cibula D, Colombo N, Leath CA, Bidziński M, et al. Olaparib versus nonplatinum chemotherapy in patients with platinum-sensitive relapsed ovarian cancer and a germline BRCA1/2 mutation (SOLO3): A randomized phase III trial. *J Clin Oncol* (2020) 38(11):1164–74. doi: 10.1200/JCO.19.02745
- Miller RE, Leary A, Scott CL, Serra V, Lord CJ, Bowtell D, et al. ESMO recommendations on predictive biomarker testing for homologous recombination deficiency and PARP inhibitor benefit in ovarian cancer. *Ann Oncol* (2020) 31(12):1606–22. doi: 10.1016/j.annonc.2020.08.2102
- Baum J, Nguyen BD, Meyer-Wilmes P, Krecklau A, Buschmann C, Boz S, et al. 764P survey on the practical implementation of BRCA gene and HRD-testing and PARP-inhibitor management in Germany: A national NOGGO/JAGO-AGO intergroup study. *Ann Oncol* (2021) 32(Suppl 5):S749–50. doi: 10.1016/j.annonc.2021.08.1206
- Aoki D, Chiyoda T. PARP inhibitors and quality of life in ovarian cancer. *Lancet Oncol* (2018) 19(8):1012–4. doi: 10.1016/S1470-2045(18)30435-2